

# STREETS AHEAD

## Merging

Merging is a safety issue on WA roads.

When two lines of traffic merge into a single lane, you must give way to the vehicle in front. (Illustration #1)

When a marked lane ends, get up to speed and safely merge into traffic in the same way as changing lanes. In this scenario, cars in the lane you are merging into have right of way, but should still leave a gap to allow for merging. (Illustration #2)

Remember to **always use your indicator, merge as soon as it is safe to do so** and **be courteous**.

## Penalty

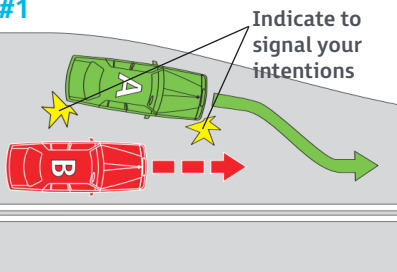
Failure to give way when merging:  
2 demerit points and  
\$100 infringement

Failure to give way when changing lanes:  
3 demerit points and  
\$100 infringement

[roadrules.rsc.wa.gov.au](http://roadrules.rsc.wa.gov.au)

*This is a simple interpretation of the law and is not intended to constitute legal advice. For further details visit the merging page in the above website.*

#1



#2

