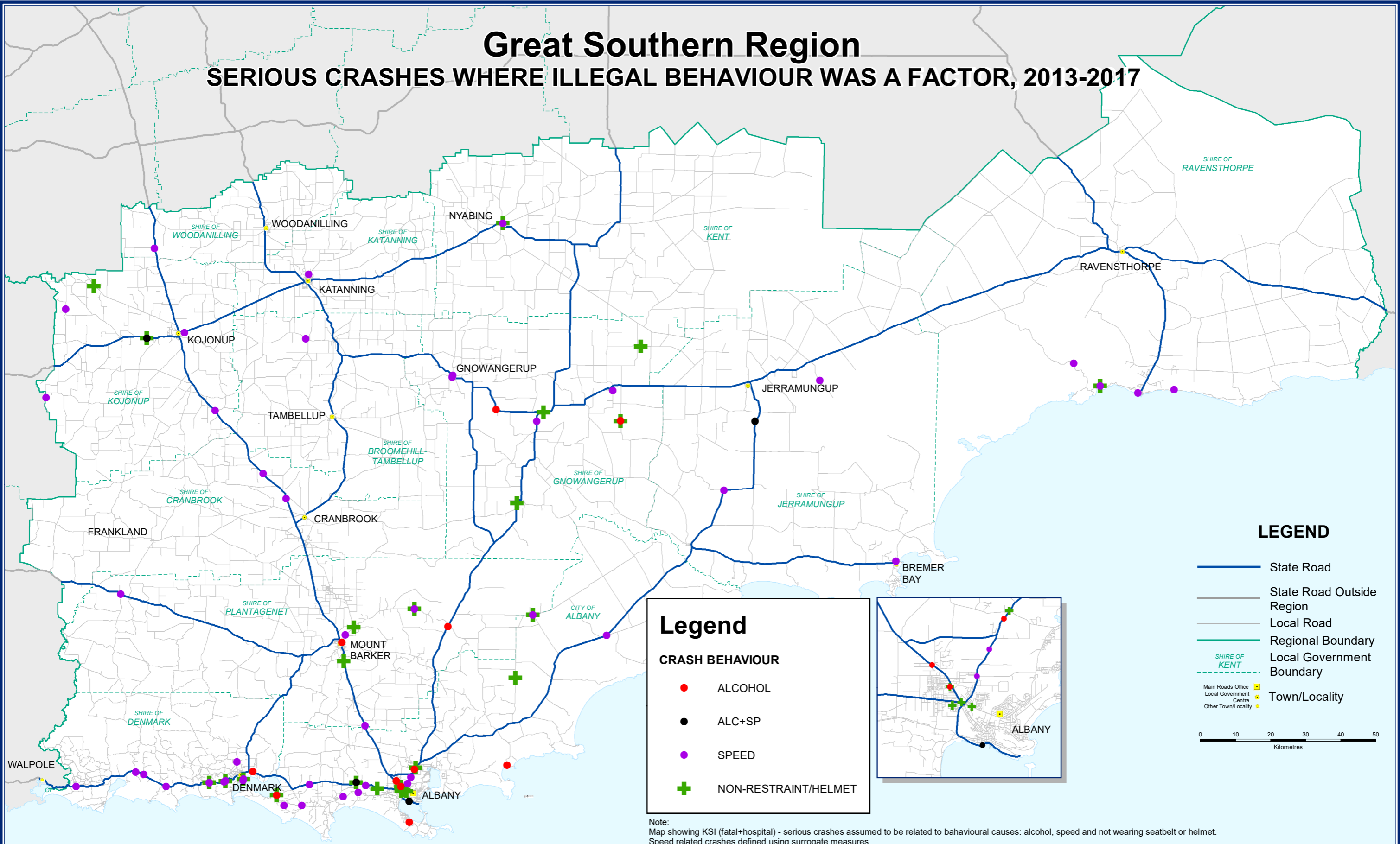


Great Southern Region

SERIOUS CRASHES WHERE ILLEGAL BEHAVIOUR WAS A FACTOR, 2013-2017



Legend

CRASH BEHAVIOUR

- ALCOHOL
- ALC+SP
- SPEED
- + NON-RESTRAINT/HELMET

LEGEND

- State Road
- State Road Outside Region
- Local Road
- Regional Boundary
- - - Local Government Boundary
- Main Roads Office
- Local Government Centre
- Other Town/Locality

0 10 20 30 40 50
Kilometres

Note:
 Map showing KSI (fatal+hospital) - serious crashes assumed to be related to behavioural causes: alcohol, speed and not wearing seatbelt or helmet.
 Speed related crashes defined using surrogate measures.
 BAC data missing for 2015, 2016 and 2017 due to changes in the sharing of data from the Chem Centre WA.
 Non-restraint/helmet crash is defined as a crash in which any driver or rider or passenger was killed or seriously injured and not wearing seatbelt or helmet.
 Non restraint crashes are not mutually exclusive from alcohol and speed related crashes; i.e. some of these crashes could also be alcohol and speed related as shown on the map.

MAP INFORMATION
 The focus of this map is the pictorial representation of the location of Serious Crashes by the Cause of the Crash in the Region.
 This information is sourced from IRIS (Integrated Road Information System).
 All other features on this map are included for pictorial representations only and should not be used where accuracy is a consideration.
 Geographic Coordinate System: Geocentric Datum of Australia 1994 - Projection MGA Zone 50
 Original Page/Map Size A3: Produced using ArcGIS 10.5.1